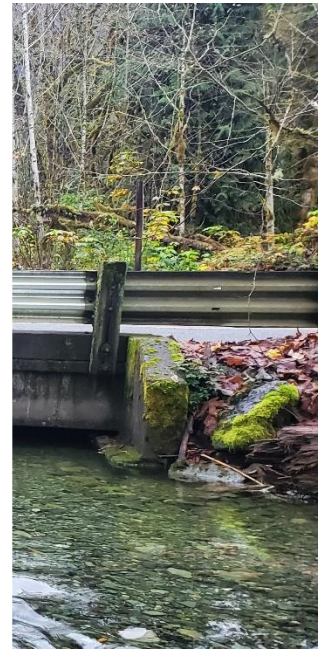




Mill Creek Feasibility Study

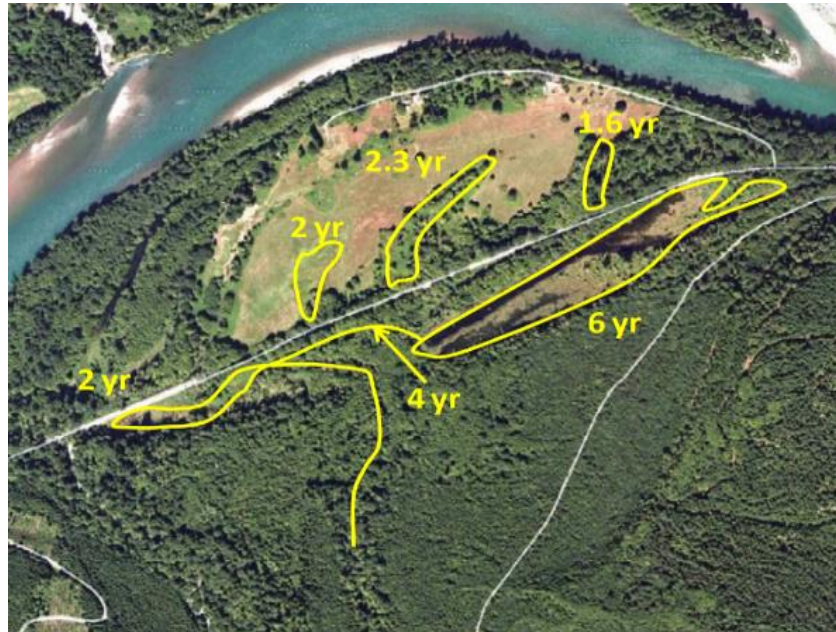
FAQ



“Not just a transportation project, not just a fish project.”

Why might a realignment be better than leaving the highway in place?

A realignment is a long-term solution, while raising the highway and bridges still leaves it at risk for flooding and damage. Realignment will also have more benefits for fish habitat, making the project more productive in more areas.



Approximate frequency of flooding in areas surrounding South Skagit Highway.
Source: TranTech Engineering LLC, March 31, 2015.

What are the next steps for this project?

Next steps for this project include selecting the best alternative, finding additional necessary funding, and creating a complete design for the alternative we choose. We hope to identify funding by July 2025 and have a complete design of the chosen alternative by September 2025. We will be communicating and working with partners and interested parties throughout these processes.



Timeline for assessing and designing an alternative for this section of South Skagit Highway. Source: HDR Engineering, Inc. "Statement of Qualifications: Mill Creek at South Skagit Highway Phase 1 Design." April 19, 2024.

When will construction for this project start?

We do not yet have an estimate for when construction will begin. Construction timing will depend on funding availability and the design process. The earliest possible construction would be 2030.

How can I learn more and keep up to date with this project?

For more information on this project and to see past reports referenced in this paper, please scan the QR code below or visit

<https://www.skagitcounty.net/Departments/PublicWorksSurfaceWaterManagement/MillCreekFeasibilityStudy.htm>

Or, you can contact Emily Derenne, Skagit County Public Works Project Manager at [360-416-1449](tel:360-416-1449) or emilyjd@co.skagit.wa.us

